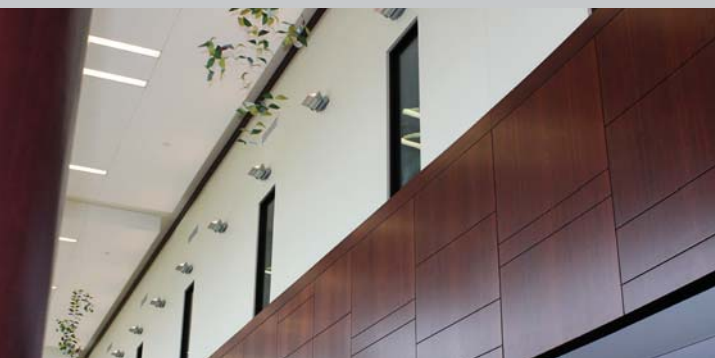




# ARCHITECTURAL *WallScapes* by Stevens

Inspirations for defining & enhancing vertical spaces



# WallScapes by Stevens

*WallScapes* elevate.

*WallScapes* inspire.

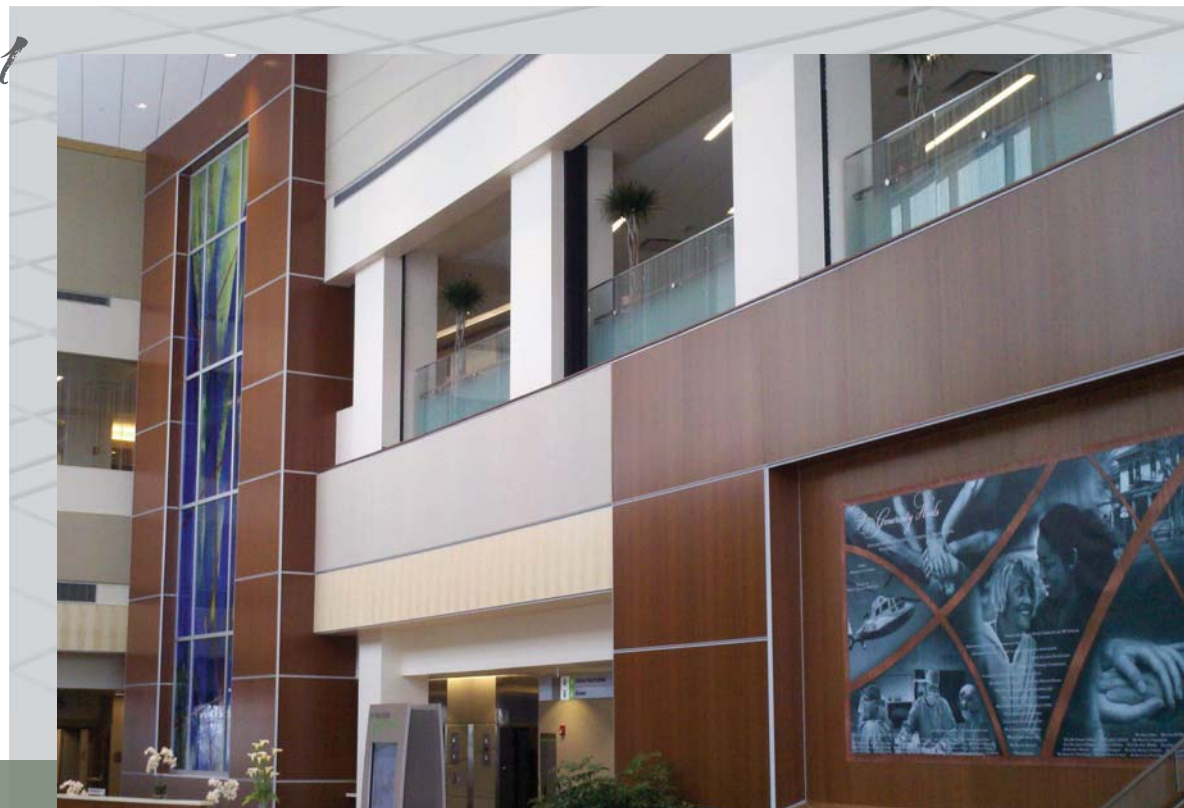
*WallScapes* transcend commonplace  
to embrace *extraordinary*.

Redefine sophisticated interiors with WallScapes wall panel systems from Stevens Industries. Surfaces become art, art becomes essential. Rich colors and deep woodgrain textures infuse charm and warmth into sweeping spaces. Vibrant colors and striking abstract patterns elevate mundane spaces to gallery-worthy design. Specify matched panel sizes for focused, streamlined spaces or alternating sizes for an energetic, contemporary approach.

pg  
2

## *Designed for:*

Healthcare  
Education  
Hospitality  
Office  
Retail  
Financial





2



1 Makore Veneer Wall Panels with Aluminum Reveals  
– Parkview Regional Medical Center, Fort Wayne, IN

2 Makore Wood Veneer Panels with Custom Stain, Aluminum Reveals and Matching Millwork  
– Sarah Bush Lincoln Health Center, Mattoon, IL

3 Wood Veneer Wall Panels with Custom Stain and Banded Reveals  
– Kennesaw State University, Kennesaw, GA

pg  
3

## *A flexible palette of materials to bring your vision to life*

System designs are available in Stevens' award-winning Legno Collection, Artika and Rain textures, Stevens Advantage® casework colors and wood veneer. WallScapes systems are available in two series with banded or aluminum reveals.

“

*Thank you for taking the time to  
create quality items and helping  
our vision become a reality.*

”

– Education Administrator, Illinois

3



# *Customize your space with creative options*

Create inviting spaces with WallScapes and transform bland, blank walls with functional glamour. Nearly endless color and grain texture combinations in high pressure laminate (HPL), thermally fused laminate (TFL) and wood veneer. Choose from a large array of panel lengths and widths to customize designs across large and small spaces. Pre-engineered, finished panels with attachment clips for swift installation; hardware and trim systems are included.

## *Design examples*

A wall panel system is comprised of individual panels oriented in columns and/or rows, which are further defined by the grain direction of the surface finish.

### COLUMN ORIENTATION – VERTICAL GRAIN



### COLUMN ORIENTATION – HORIZONTAL GRAIN



### ROW ORIENTATION – VERTICAL GRAIN



### ROW ORIENTATION – HORIZONTAL GRAIN



*Combinations of columns, rows, grain direction & colors can be used within one wall panel system.*





1



2

pg  
5

- 1 3-Story Cherry Wood Veneer Wall Panels with Aluminum Reveals  
– Midland States Bank Headquarters, Effingham, IL
- 2 White Maple Veneer Wall Panels with Custom Stain and Banded Reveals  
– Paris Cooperative High School, Paris, IL
- 3 Amber Cherry HPL Wall Panels with Aluminum Reveals and Matching Casework  
– Elkhart General Hospital, Elkhart, IN

3



## A REVEAL DOMINANCE

vertical or horizontal – mix & match any reveal sizes



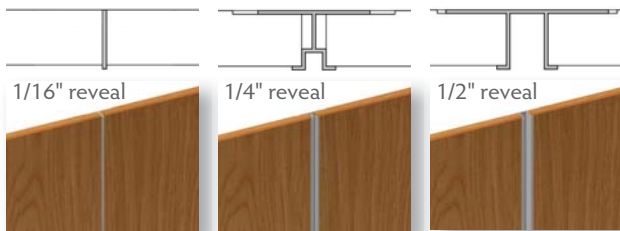
vertical dominance



horizontal dominance

## B REVEALS

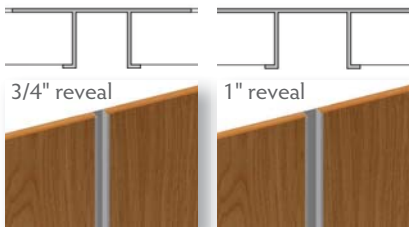
horizontal or vertical reveals – 1/16", 1/4", 1/2", 3/4", 1"



1/16" reveal

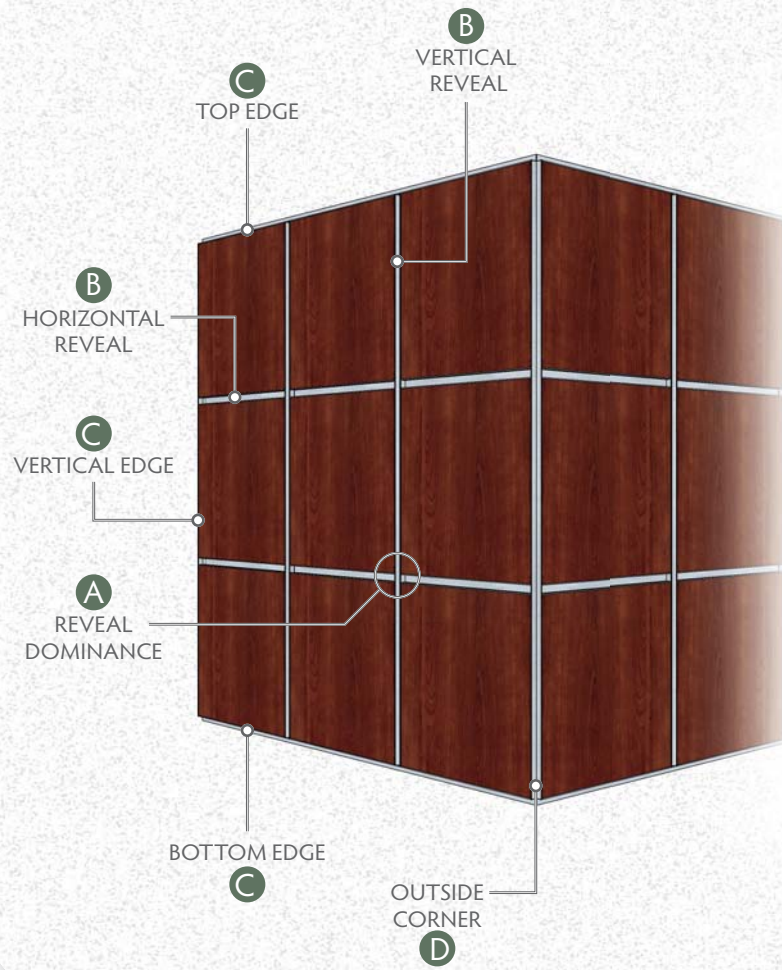
1/4" reveal

1/2" reveal



3/4" reveal

1" reveal



## Element Series

Exposed clear anodized aluminum perimeter trim. Reveals from 1/16" to 1".

## C WALL PANEL ENDS

extrusions cap off panel ends (top, bottom, vertical edges)



end cap edge



reveal edge



angled edge (top edge only)

drip edge (bottom edge only)

## D OUTSIDE CORNERS

open, mitered or wood trim options



open



mitered



wood radius

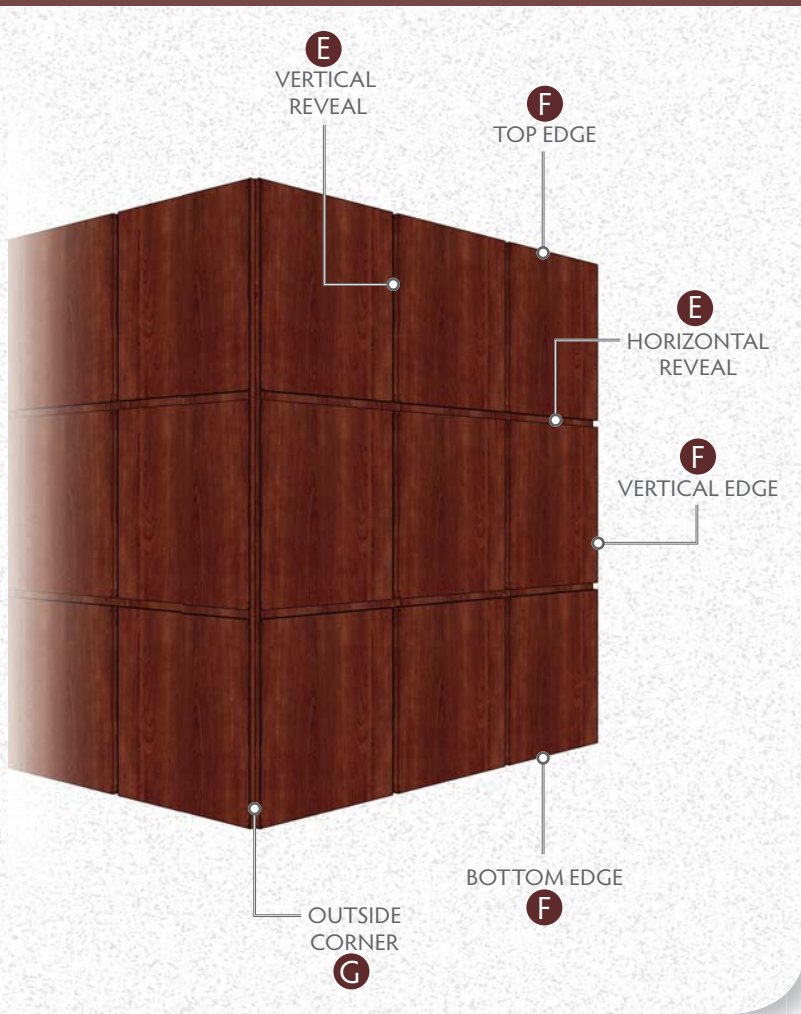


wood bevel



Makore Wood Veneer Panels with Custom Stain, Aluminum Reveals and Matching Millwork  
Sarah Bush Lincoln Health Center  
Mattoon, IL





## Edge Series

Banded panel reveals, matching or contrasting to panel surface. Reveals from 1/16" to 1".



White Maple Veneer Wall Panels with Custom Stain and Banded Reveals  
*Paris Cooperative High School  
Paris, IL*

### E REVEAL EDGES / REVEAL PANELS

matching or contrasting (aluminum color option available for contrasting finish)

horizontal or vertical reveals – 1/16", 1/4", 1/2", 3/4", 1"



matching edge and reveal panel



contrasting edge and reveal panel



matching edge and contrasting reveal panel

### F WALL PANEL ENDS

matching or contrasting (top, bottom, vertical edges; aluminum color option available for contrasting finish)



matching end



contrasting end

### G OUTSIDE CORNERS

open, overlap or wood trim options



open



overlap



wood radius



wood bevel

Surface Options: Stevens Advantage® Wood Veneer  
StevensWood® High Definition HPL / TFL  
Stevens Advantage® HPL / TFL

Core Options: Particleboard (M-2 Grade CARB-Compliant,  
Moisture-Resistant/NAF, Fire-Rated)  
Medium Density Fiberboard (MD-130,  
Moisture-Resistant/NAF, Fire-Rated)

Wood Veneer Wall Panels with Custom Cherry  
Stain and Matching Banded Reveals  
*Carle Foundation Hospital  
Heart and Vascular Institute  
Urbana, IL*

Stevens Advantage® has been the trusted name in commercial millwork and casework for nearly seven decades, completing thousands of projects across the country. Our state-of-the-art facility covers more than 650,000 square feet of production space, and our skilled team of 500-plus employees brings designs to life. Our expertise will seamlessly meld design with durability. Surface options include thermally fused laminate, high pressure laminate or veneer, with rich colors and designer-approved textures to flatter and enhance any space.

From hospitals to clinics and dental offices, from universities to high schools and grammar schools, laboratories to libraries, Stevens brings tremendous Advantages to each project. Simplify by choosing Stevens as your one-stop-shop for complete casework, countertop, windowsill, wall panel systems and millwork packages.

Design to installation, Stevens is the perfect partner for your next project. Choose Stevens Advantage® to turn over polished spaces that will leave clients singing your praises.



For a complete list of Stevens products that are GREENGUARD Certified, please visit:  
[www.ul.com/gg](http://www.ul.com/gg)



FSC® products available upon request.



Shaker Cherry II HPL Wall Panels with Aluminum Reveals  
*St. Vincent/St. Clair Hospital  
Pell City, AL*



**STEVENS ADVANTAGE®**

704 West Main Street  
Teutopolis, IL 62467  
217.857.7100

[StevensAdvantage.com](http://StevensAdvantage.com)

©2018 Stevens Industries, Inc.  
Due to continuing product development,  
Stevens reserves the right to change  
specifications without notice.

3447.5/18