



Table of Contents

Terms and Codes 3
 Top Sections 4-6

COUNTERTOPS

Laminate Series 8-12

LS00: 90° postform edge top, applied 90° postform edge backsplash, applied self edge endsplash8
 LS03: Flat edge PVC top, applied flat edge backsplash and endsplash.....8
 LS05: 3mm edge top, applied 3mm edge backsplash and endsplash.....9
 LS07: Self edge top, applied self edge backsplash and endsplash.....9
 LS10: 90° postform edge top, integral covered 90° postform edge backsplash, applied self edge endsplash10
 LS11: 3mm edge top, integral covered 3mm edge backsplash, applied 3mm edge endsplash.....10
 LS15: 180° postform edge top, applied 90° postform edge backsplash, applied self edge endsplash11
 LS16: 180° postform edge top, integral covered 90° postform edge backsplash, applied self edge endsplash.....11
 LS25: Chemical resistant face laminate, 3mm edge top, applied 3mm edge backsplash and endsplash12
 LS26: Chemical resistant face laminate, self edge top, applied self edge backsplash and endsplash12

Wood Edge Laminate Series..... 13

LS20: Custom Profile Wood Edge..... 13

Solid Surface Series 14-15

PS59: 3R/3R profile top: Applied backsplash14
 PS60: 3R/.5B profile top: Applied backsplash14
 PS68: 12R/12R profile top: Applied backsplash15
 PS79: 3R/3R profile top: Integral covered backsplash.....16
 PS88: 12R/12R profile top: Integral covered backsplash16

Epoxy Resin Series 17

ES00: Applied backsplash and endsplash, drip groove17
 ES02: Lipped marine edge top, applied backsplash and endsplash.....17

Phenolic Series 18

CP00: Chemical resistant face, color through core, drip groove.....18

(continued next page)



Table of Contents *(continued)*

| | |
|---|-----------|
| Stainless Steel Series | 19 |
| SS00: Formed edge | 19 |
| SS01: Marine edge | 19 |
| SS02: Formed edge, no backsplash | 19 |
| Stone Series | 20 |
| HS00: Straight polish/straight polish profile edge top, applied backsplash | 20 |
| Hardwood Series | 21 |
| WD00: Edges sanded smooth with corners broken, applied backsplash | 21 |

WINDOWSILLS

| | |
|--|--------------|
| Laminate Series | 22-23 |
| LS07: Self edge | 22 |
| LS03: Flat PVC edge..... | 22 |
| LS00: 90° postform edge | 23 |
| Solid Surface Series | 24-25 |
| PS59: 3R/3R profile edge..... | 24 |
| PS60: 3R/.5B profile edge..... | 25 |
| Epoxy Resin Series | 26 |
| ES00: 3mm beveled edge..... | 26 |
| Phenolic Series | 26 |
| CP00: Chemical resistant face, color through core..... | 26 |



Stevens Industries, Inc., from its initial founding in 1956, has provided a complete solution of cabinets and countertops fabricated and coordinated as a full product offering. Stevens Advantage countertops, included with the wide range of cabinets and millwork, can complete the entire project's requirements. Countertops are available in several versions of laminate, solid surface (polymer), epoxy resin, hardwood, phenolic, stainless steel, stone and hardwood. The following technical descriptions and design data illustrate the available designs. Beyond those shown, Stevens Millwork can also provide unique special applications.

GLOSSARY OF TERMS:

| | |
|----------------|--|
| 3mm Edge: | Edge with high impact 3mm (1/8") thickness extrusion (patterns available from Stevens standard offering) |
| 90° Postform: | Seamless formed High Pressure Laminate wrapped over a 90° radius profile (eliminates brown edges and separate applied edge strips) |
| 180° Postform: | Seamless formed High Pressure Laminate wrapped over a 180° profile (eliminates brown edges and separate applied edge strips) |
| Backer: | Underside faced with laminate backer |
| HGS: | Horizontal Grade Standard |
| HPL: | High Pressure Laminate |
| Integral Cove: | Backsplash with a concave formed seamless intersection between countertop and backsplash |
| Marine Edge: | Raised outside countertop edge |
| Self Edge: | Edges laminated with same High Pressure Laminate as countertop face |
| TFL: | Thermally Fused Laminate |

COUNTERTOP PREFIX CODES:

| | |
|-----------------|--|
| CP: Phenolic | PS: Solid Surface (Polymer) |
| ES: Epoxy Resin | SS: Stainless Steel |
| HS: Stone | WD: Laminated Hardwood (Butcher Block) |
| LS: Laminate | |

CORES:

Laminate countertops and solid surface countertops with substrates are offered in the following cores:

(Some cores not available in all thicknesses, see series offering for full details)

Particleboard

- Ultra Low Emitting Formaldehyde Particleboard
- Moisture Resistant Particleboard
- Ultra Low Emitting Formaldehyde Moisture Resistant Particleboard
- Fire Rated Particleboard

Medium Density Fiberboard

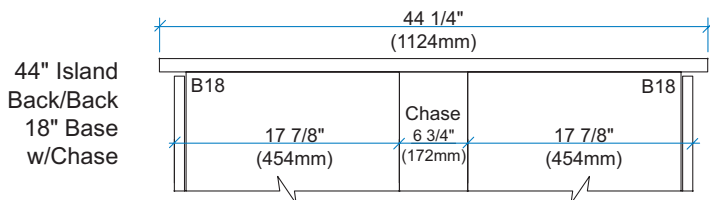
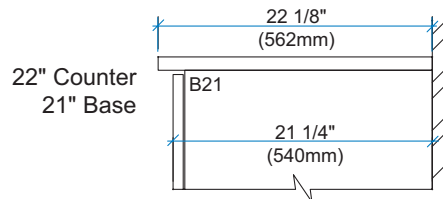
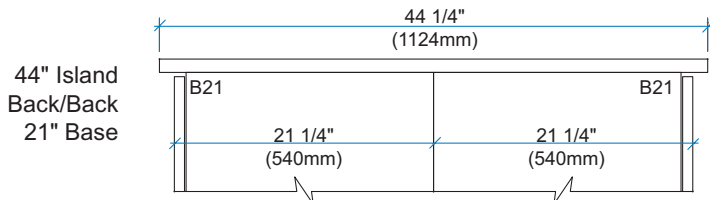
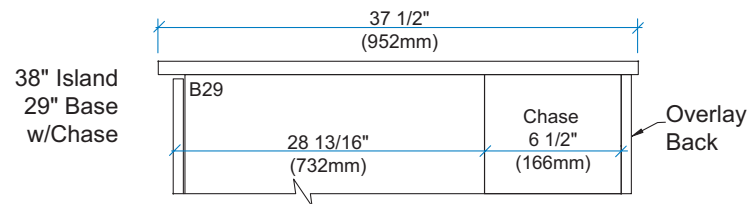
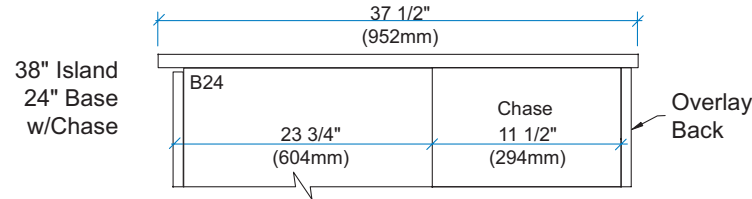
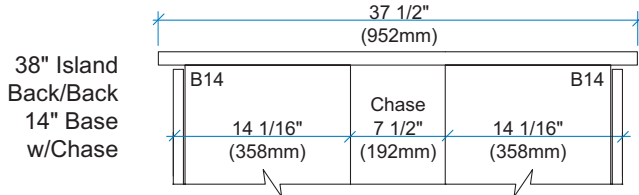
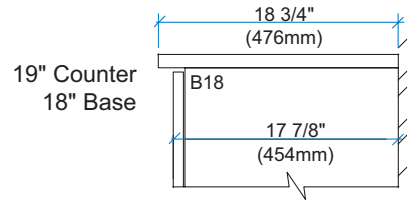
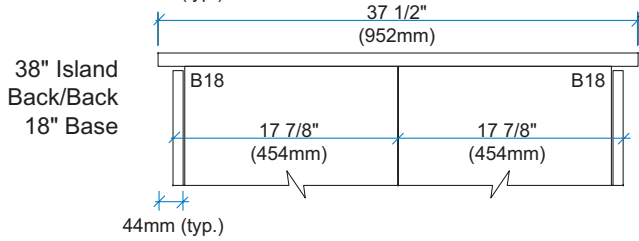
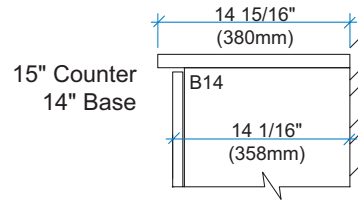
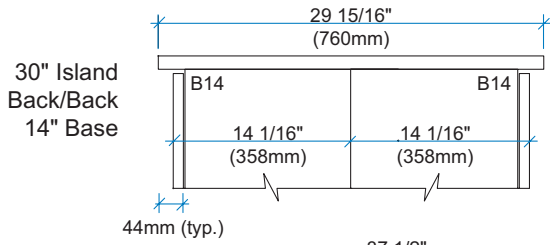
- Ultra Low Emitting Formaldehyde Medium Density Fiberboard
- Moisture Resistant Medium Density Fiberboard
- Ultra Low Emitting Formaldehyde Moisture Resistant Medium Density Fiberboard
- Fire Rated Medium Density Fiberboard

Plywood

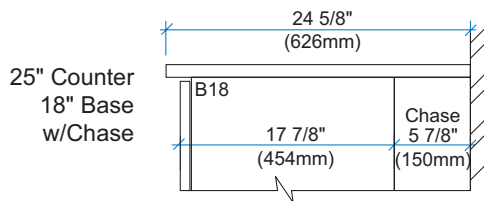
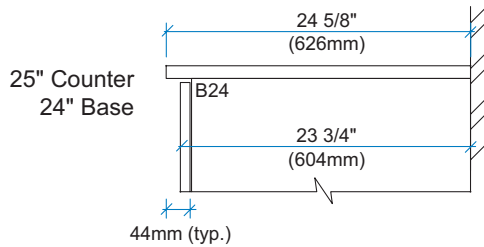
COUNTERTOPS



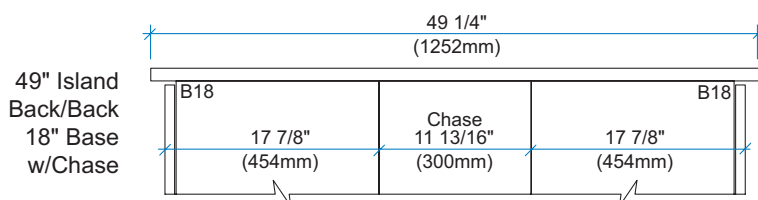
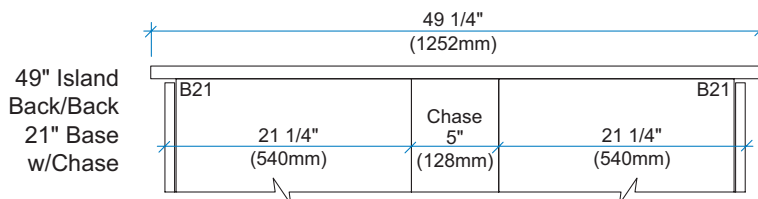
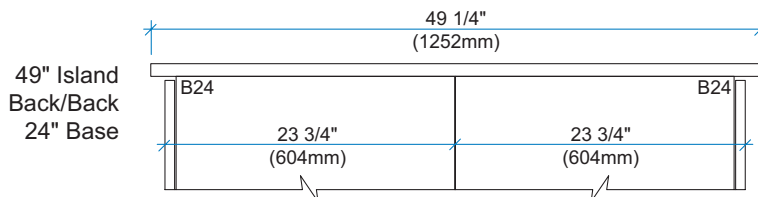
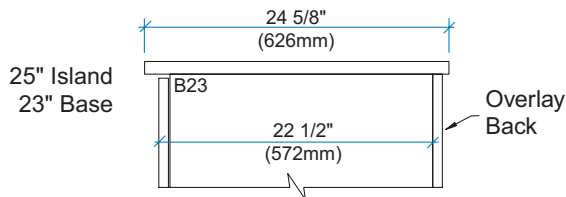
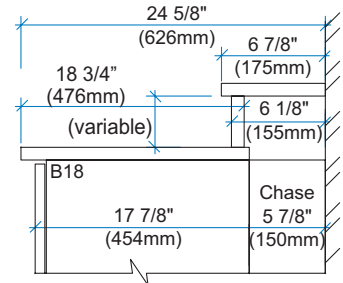
Top Sections 15"/19"/22" Countertops 30"/38"/44" Island Tops



Top Sections 25" Countertops 25"/49" Island Tops



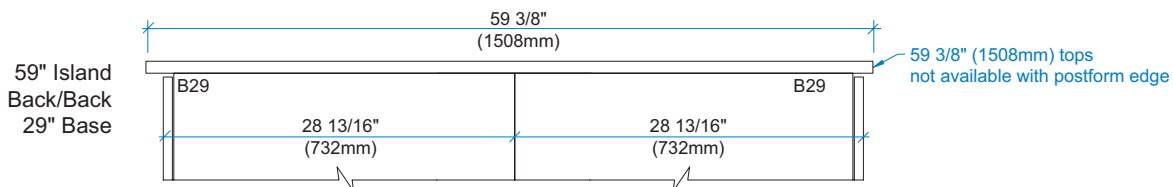
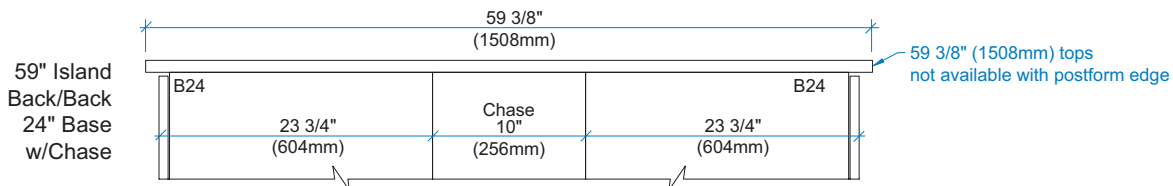
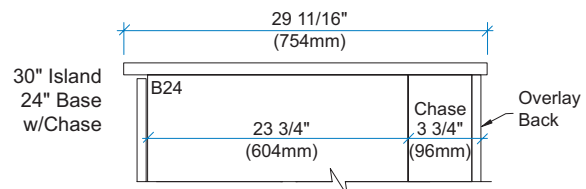
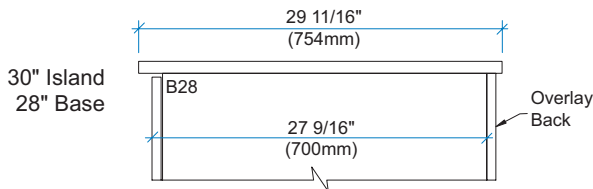
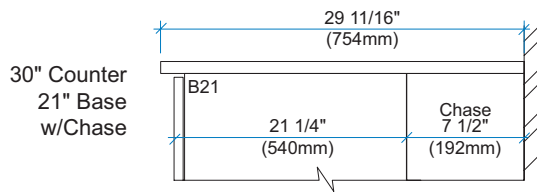
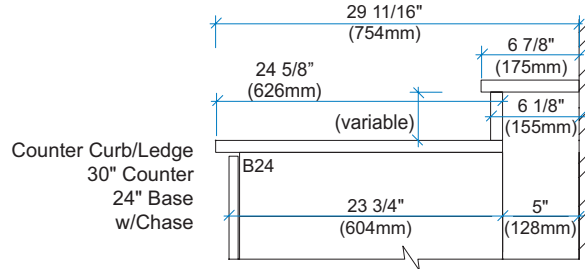
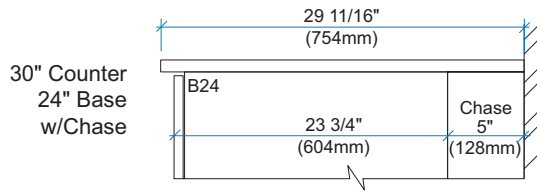
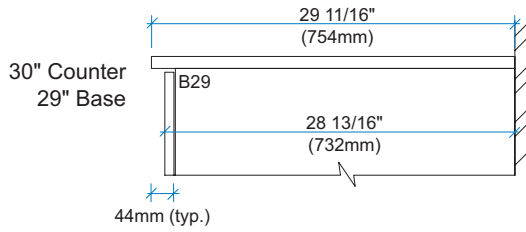
Counter Curb/Ledge
25" Counter
18" Base
w/Chase



COUNTERTOPS



Top Sections 30" Countertops 30"/59" Island Tops



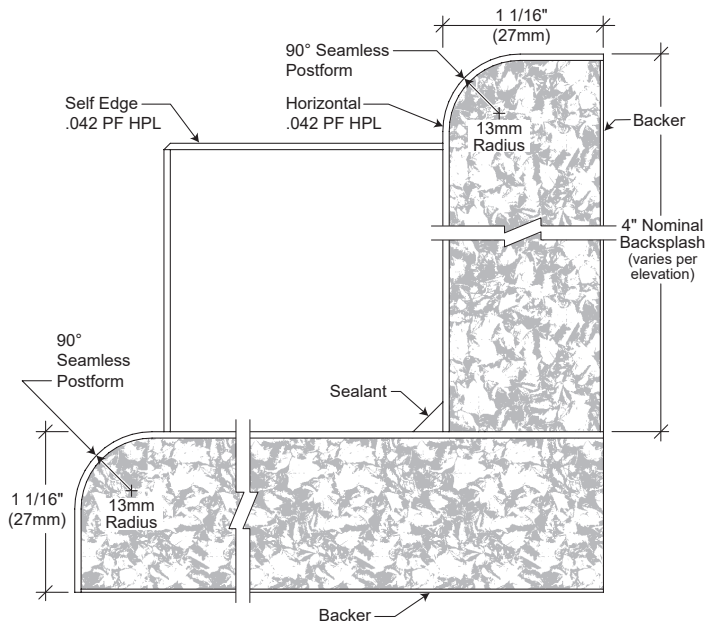


COUNTERTOPS

Laminate Series



LS00



LS00 LAMINATE

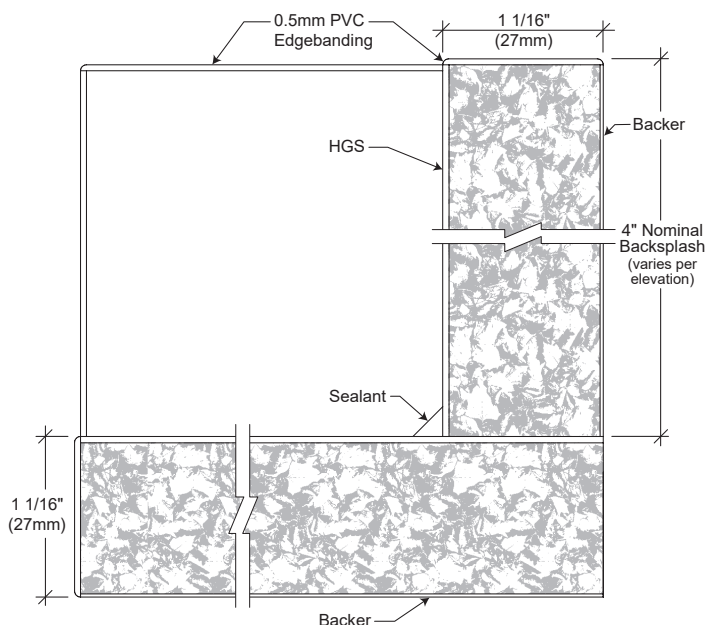
- 90° postform edge top
- Applied 90° postform edge backsplash
- Applied self edge endsplash
- Backsplash/Endsplash thickness = Top Thickness, except when Top is 40mm thick, then it has 3/4" splashes.

AVAILABLE COUNTERTOP THICKNESSES:

All Cores Except Plywood

- 21mm (13/16")
- 27mm (1-1/16")
- 30mm (1-3/16") (n/a for fire-rated particleboard)
- 40mm (1-9/16") (n/a for fire-rated MDF)

LS03



LS03 LAMINATE

- Flat edge PVC top
- Applied flat edge PVC backsplash and endsplash
- Backsplash/Endsplash thickness = Top Thickness, except when Top is 40mm thick, then it has 3/4" splashes.

AVAILABLE COUNTERTOP THICKNESSES:

All Cores Except Plywood

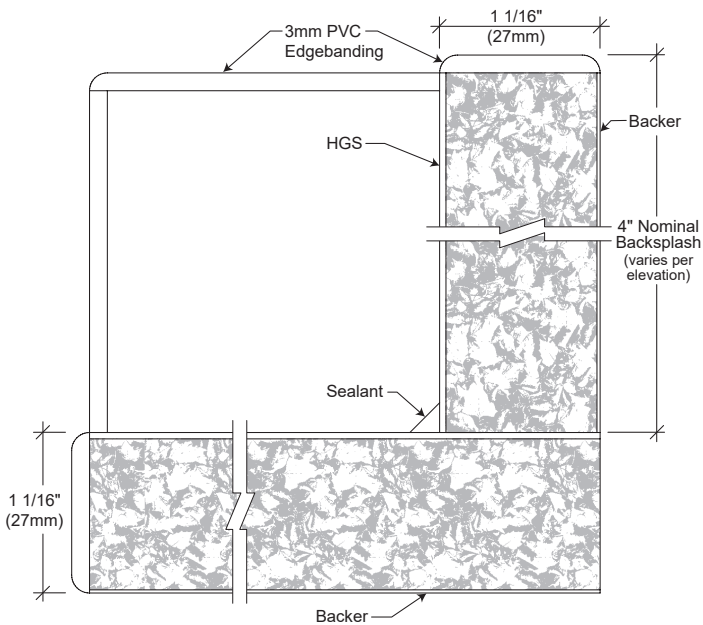
- 21mm (13/16")
- 27mm (1-1/16")
- 30mm (1-3/16") (n/a for fire-rated particleboard)
- 40mm (1-9/16") (n/a for fire-rated MDF)

Plywood

- 27mm (1-1/16")
- 40mm (1-9/16")

Drop edge available upon special request in 1/2" increments, from 2" to 6". Drop edge not available over casework.

LS05



LS05 LAMINATE

- 3mm edge top
- Applied 3mm edge backsplash and endsplash
- Backsplash/Endsplash thickness = Top Thickness, except when Top is 40mm thick, then it has 3/4" splashes.

AVAILABLE COUNTERTOP THICKNESSES:

All Cores Except Plywood

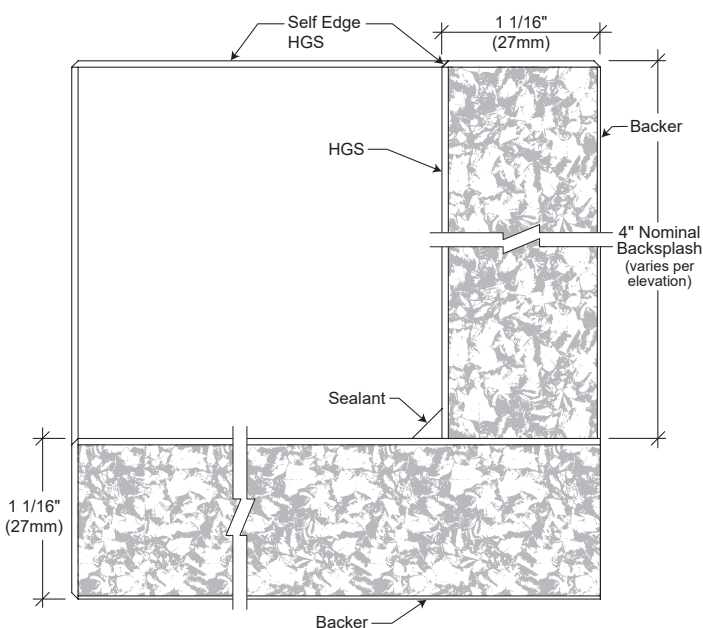
- 21mm (13/16")
- 27mm (1-1/16")
- 30mm (1-3/16") (n/a for fire-rated particleboard)
- 40mm (1-9/16")* (n/a for fire-rated MDF)

Plywood

- 27mm (1-1/16")
- 40mm (1-9/16")*

*Edges: specific patterns only

LS07



LS07 LAMINATE

- Self edge top
- Applied self edge backsplash and endsplash
- Backsplash/Endsplash thickness = Top Thickness, except when Top is 40mm thick, then it has 3/4" splashes.

AVAILABLE COUNTERTOP THICKNESSES:

All Cores Except Plywood

- 21mm (13/16")
- 27mm (1-1/16")
- 30mm (1-3/16") (n/a for fire-rated particleboard)
- 40mm (1-9/16") (n/a for fire-rated MDF)

Plywood

- 27mm (1-1/16")
- 40mm (1-9/16")

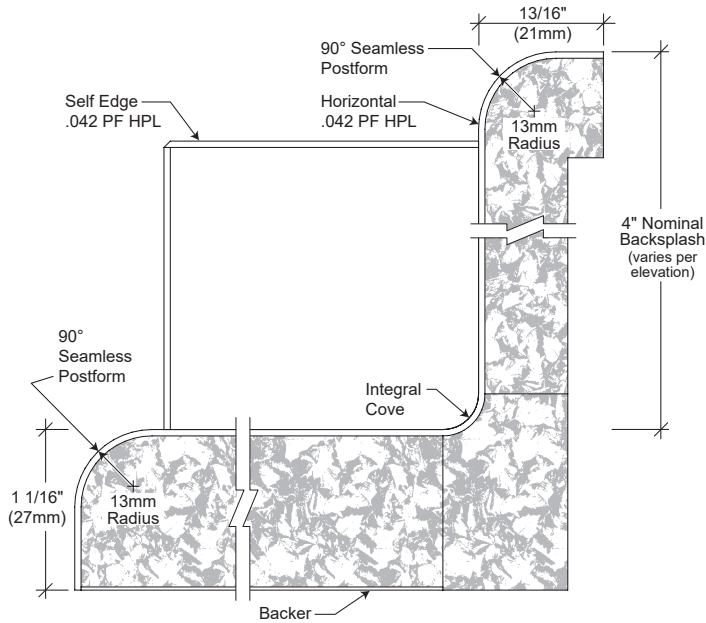
Drop edge available upon special request in 1/2" increments, from 2" to 6". Drop edge not available over casework.

COUNTERTOPS

Laminate Series



LS10



LS10 LAMINATE

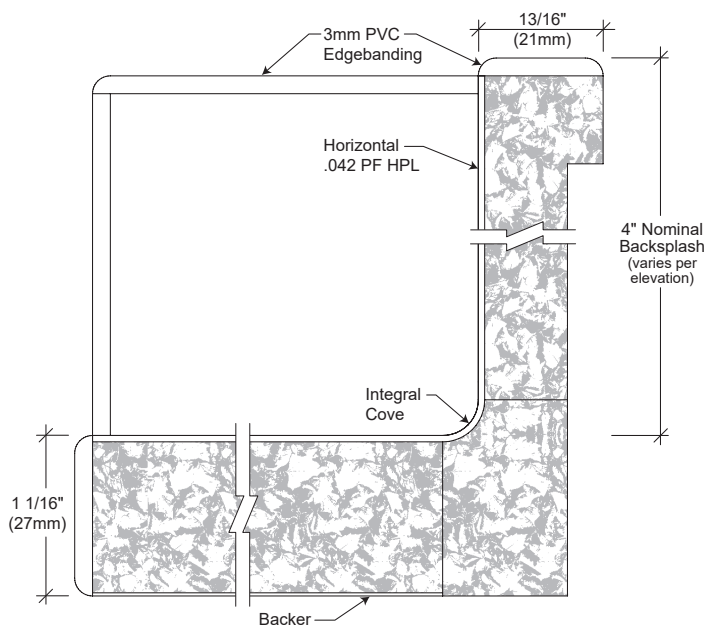
- 90° postform edge top
- Integral covered 90° postform edge backsplash
- Applied self edge endsplash

AVAILABLE COUNTERTOP THICKNESSES:

All Cores Except Plywood

- 27mm (1-1/16")
- 30mm (1-3/16") (n/a for fire-rated particleboard)
- 40mm (1-9/16") (n/a for fire-rated MDF)

LS11



LS11 LAMINATE

- 3mm edge top
- Integral covered 3mm edge backsplash
- Applied 3mm edge endsplash

AVAILABLE COUNTERTOP THICKNESSES:

All Cores Except Plywood

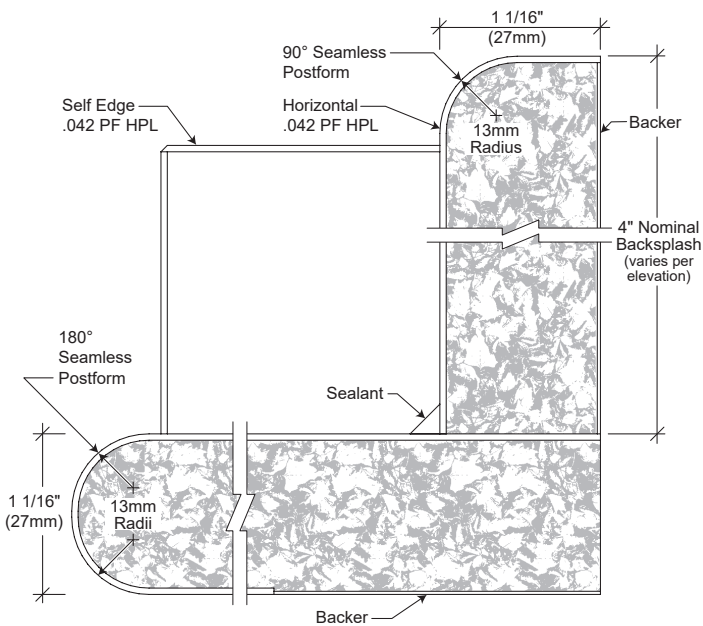
- 27mm (1-1/16")
- 30mm (1-3/16") (n/a for fire-rated particleboard)
- 40mm (1-9/16")* (n/a for fire-rated MDF)

Plywood

- 27mm (1-1/16")
- 40mm (1-9/16")*

*Edges: specific patterns only

LS15



LS15 LAMINATE

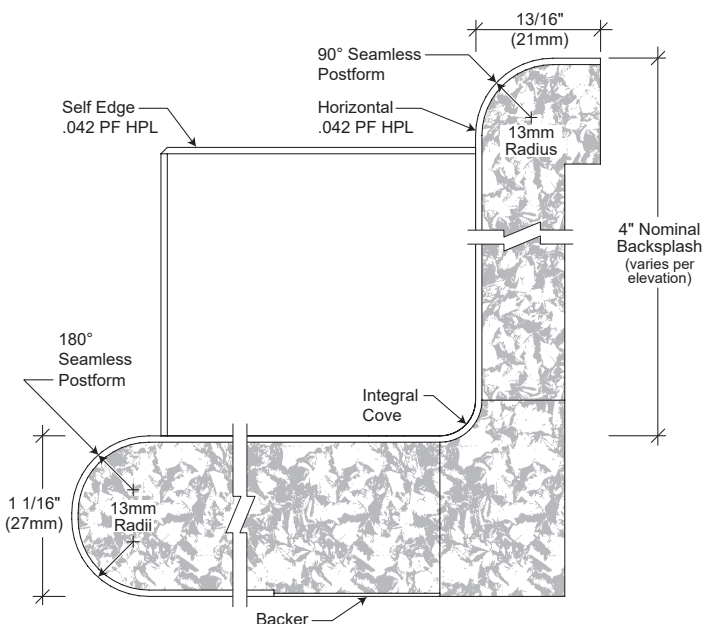
- 180° postform edge top
- Applied 90° postform edge backplash
- Applied self edge endsplash
- Backsplash/Endsplash thickness = Top Thickness, except when Top is 40mm thick, then it has 3/4" splashes.

AVAILABLE COUNTERTOP THICKNESSES:

All Cores Except Plywood

- 27mm (1-1/16")
- 30mm (1-3/16") (n/a for fire-rated particleboard)
- 40mm (1-9/16") (n/a for fire-rated MDF)

LS16



LS16 LAMINATE

- 180° postform edge top
- Integral covered 90° postform edge backplash
- Applied self edge endsplash

AVAILABLE COUNTERTOP THICKNESSES:

All Cores Except Plywood

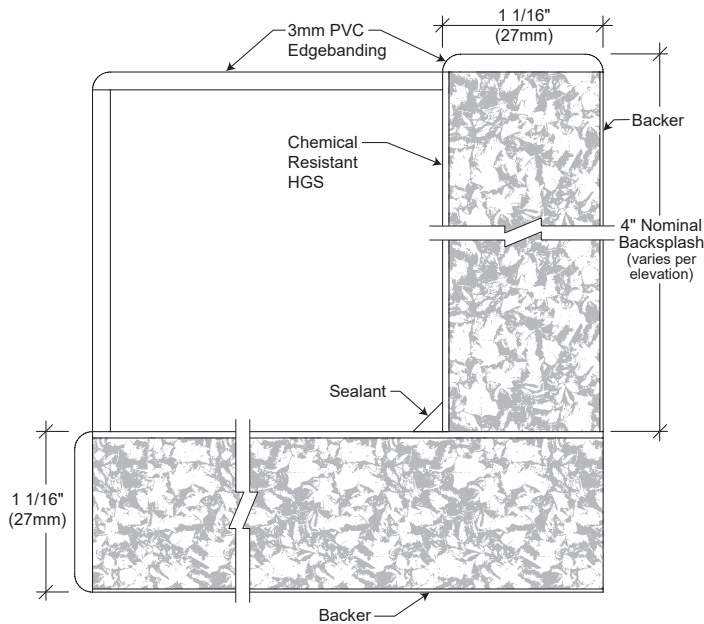
- 27mm (1-1/16")
- 30mm (1-3/16") (n/a for fire-rated particleboard)
- 40mm (1-9/16") (n/a for fire-rated MDF)

COUNTERTOPS

Laminate Series Chemical Resistant



LS25



LS25 CHEMICAL RESISTANT LAMINATE

- Chemical resistant face laminate
- 3mm edge top
- Applied 3mm edge backsplash and endsplash
- Backsplash/Endsplash thickness = Top Thickness, except when Top is 40mm thick, then it has 3/4" splashes.

AVAILABLE COUNTERTOP THICKNESSES:

All Cores Except Plywood

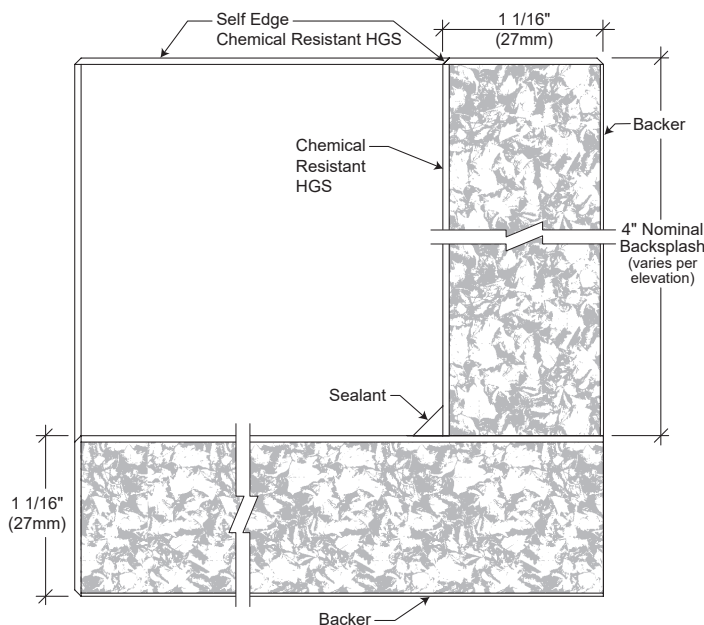
- 21mm (13/16")
- 27mm (1-1/16")
- 30mm (1-3/16") (n/a for fire-rated particleboard)
- 40mm (1-9/16")* (n/a for fire-rated MDF)

Plywood

- 27mm (1-1/16")
- 40mm (1-9/16")*

*Edges: specific patterns only

LS26



LS26 CHEMICAL RESISTANT LAMINATE

- Chemical resistant face laminate
- Self edge top
- Applied self edge backsplash and endsplash
- Backsplash/Endsplash thickness = Top Thickness, except when Top is 40mm thick, then it has 3/4" splashes.

AVAILABLE COUNTERTOP THICKNESSES:

All Cores Except Plywood

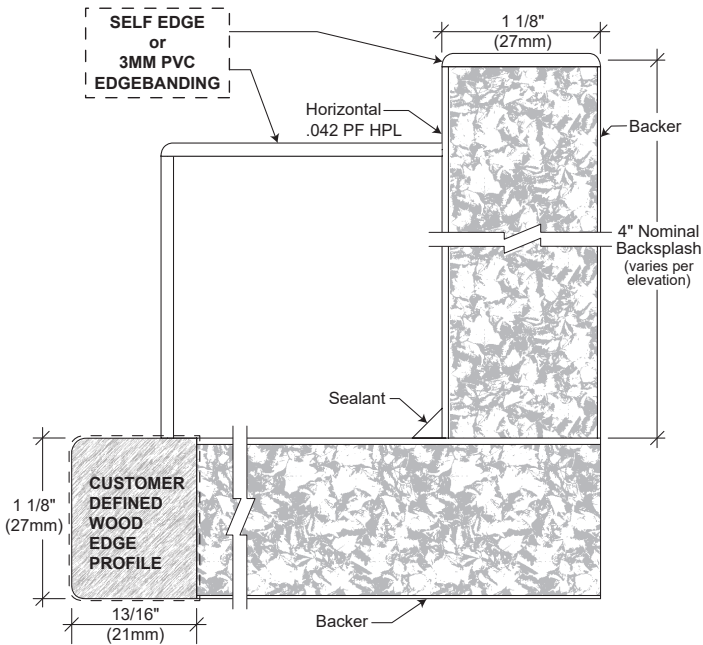
- 21mm (13/16")
- 27mm (1-1/16")
- 30mm (1-3/16") (n/a for fire-rated particleboard)
- 40mm (1-9/16") (n/a for fire-rated MDF)

Plywood

- 27mm (1-1/16")
- 40mm (1-9/16")

Drop edge available upon special request in 1/2" increments, from 2" to 6". Drop edge not available over casework.

LS20 CUSTOM



LS20 CUSTOM WOOD EDGE LAMINATE TOP

- Profile supplied by customer.
- Applied self edge or 3mm edge backsplash and endsplash
- Backsplash/Endsplash thickness = Top Thickness, except when Top is 40mm thick, then it has 3/4" splashes.

AVAILABLE COUNTERTOP THICKNESSES:

All Cores Except Plywood

- 21mm (13/16")
- 27mm (1-1/16")
- 30mm (1-3/16") (n/a for fire-rated particleboard)
- 40mm (1-9/16") (n/a for fire-rated MDF)

Plywood

- 27mm (1-1/16")
- 40mm (1-9/16")

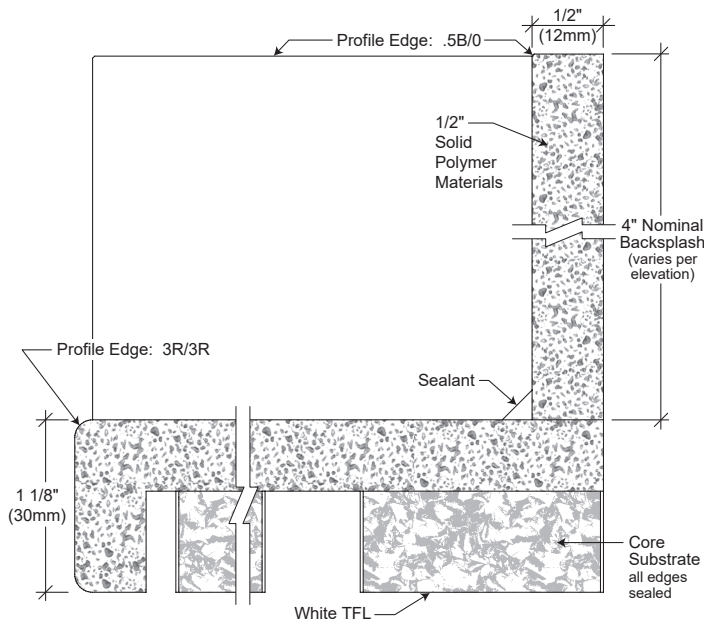
COUNTERTOPS

Solid Surface Series



PS59

(Stevens preferred)



PS59 SOLID SURFACE

- Solid surface (polymer) materials
- 3R/3R profile edge top
- Applied .5B/0 profile edge backsplash and endsplash

Backsplashes and Endsplashes Are Solid

AVAILABLE COUNTERTOP THICKNESSES:

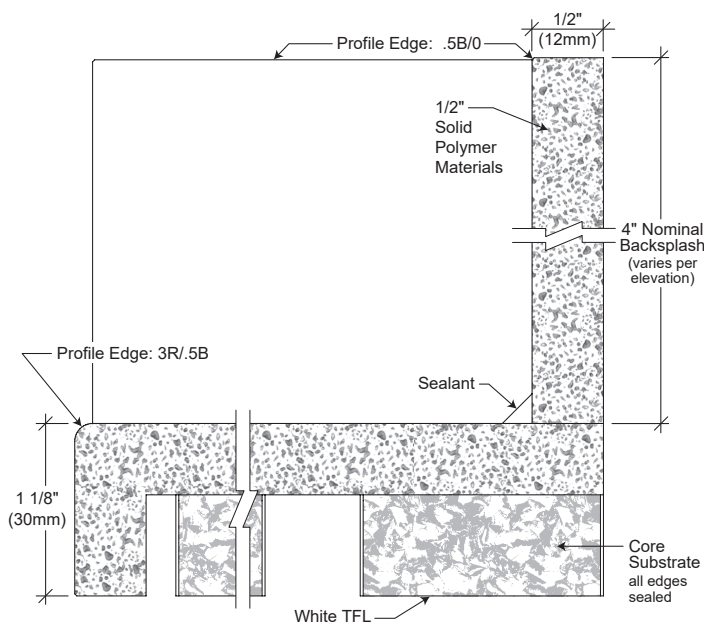
All Cores

30mm (1-1/8")

38mm (1-1/2")

Drop edge available upon special request in 1/2" increments, from 2" to 6". Drop edge not available over casework.

PS60



PS60 SOLID SURFACE

- Solid surface (polymer) materials
- 3R/.5B profile edge top
- Applied .5B/0 profile edge backsplash and endsplash

Backsplashes and Endsplashes Are Solid

AVAILABLE COUNTERTOP THICKNESSES:

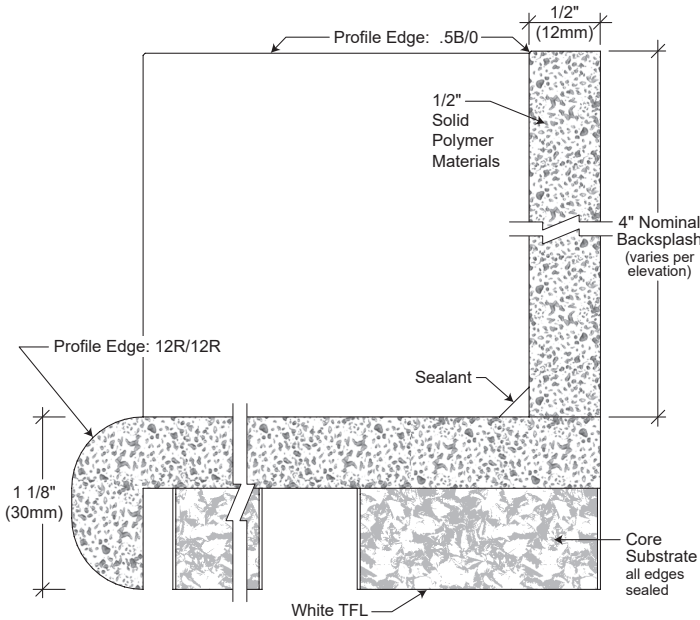
All Cores

30mm (1-1/8")

38mm (1-1/2")

Drop edge available upon special request in 1/2" increments, from 2" to 6". Drop edge not available over casework.

PS68



PS68 SOLID SURFACE

- Solid surface (polymer) materials
- 12R/12R profile edge top
- Applied .5B/0 profile edge backsplash and endsplash

Backsplashes and Endsplashes Are Solid

AVAILABLE COUNTERTOP THICKNESSES:

All Cores

30mm (1-1/8")

38mm (1-1/2")

Drop edge available upon special request in 1/2" increments, from 2" to 6". Drop edge not available over casework.

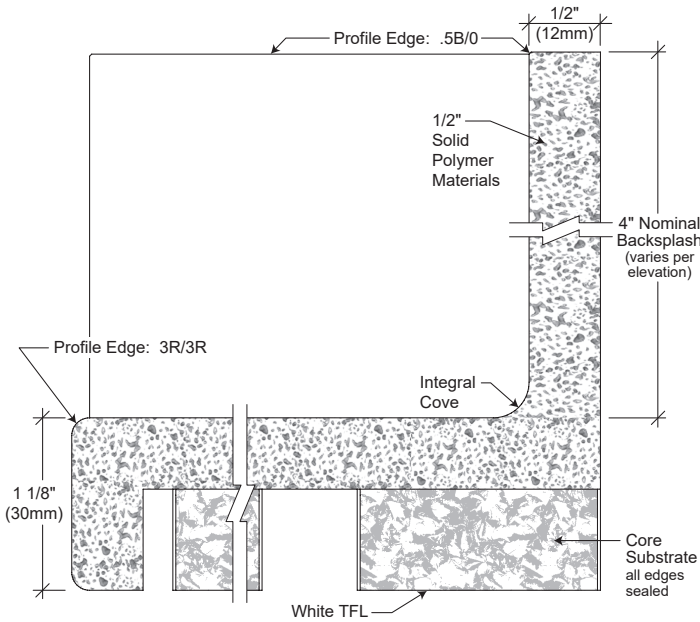
COUNTERTOPS

Solid Surface Series



PS79

(Stevens preferred)



PS79 SOLID SURFACE

- Solid surface (polymer) materials
- 3R/3R profile edge top
- Integral covered .5B/0 profile edge backsplash
- Applied .5B/0 profile edge endsplash

Endsplashes Are Solid

AVAILABLE COUNTERTOP THICKNESSES:

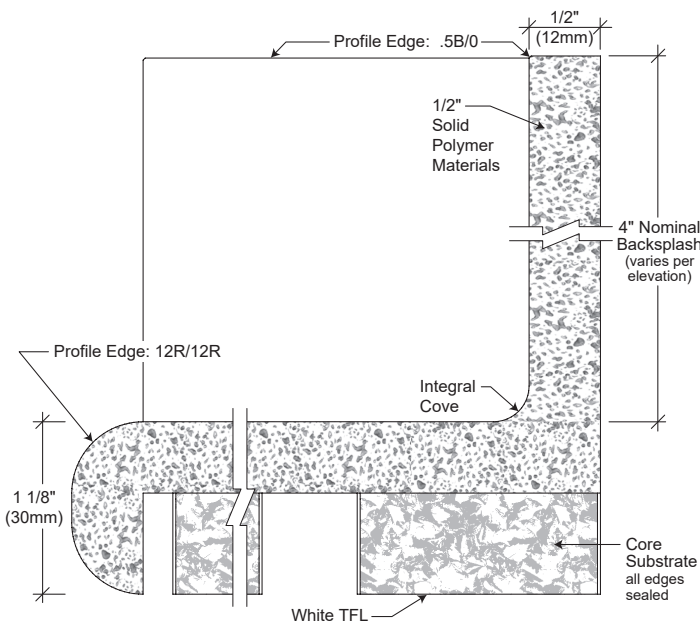
All Cores

30mm (1-1/8")

38mm (1-1/2")

Drop edge available upon special request in 1/2" increments, from 2" to 6". Drop edge not available over casework.

PS88



PS88 SOLID SURFACE

- Solid surface (polymer) materials
- 12R/12R profile edge top
- Integral covered .5B/0 profile edge backsplash
- Applied .5B/0 profile edge endsplash

Endsplashes Are Solid

AVAILABLE COUNTERTOP THICKNESSES:

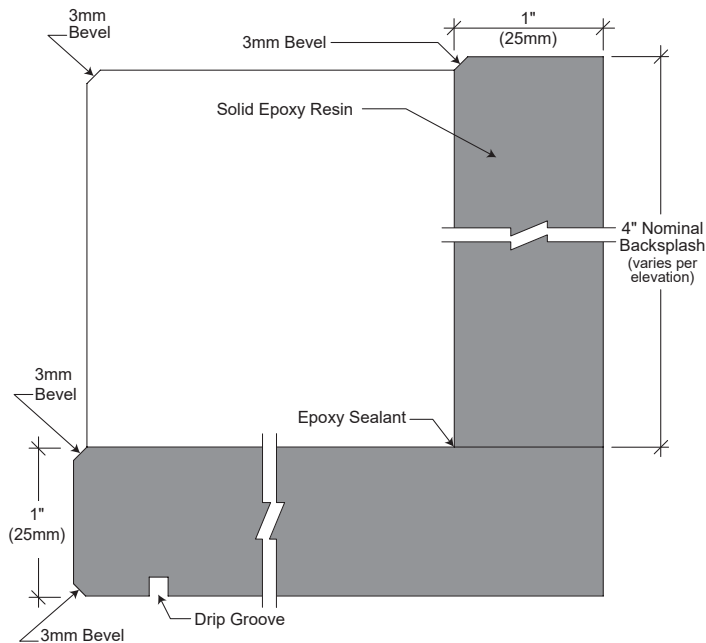
All Cores

30mm (1-1/8")

38mm (1-1/2")

Drop edge available upon special request in 1/2" increments, from 2" to 6". Drop edge not available over casework.

ES00



ES00 EPOXY RESIN

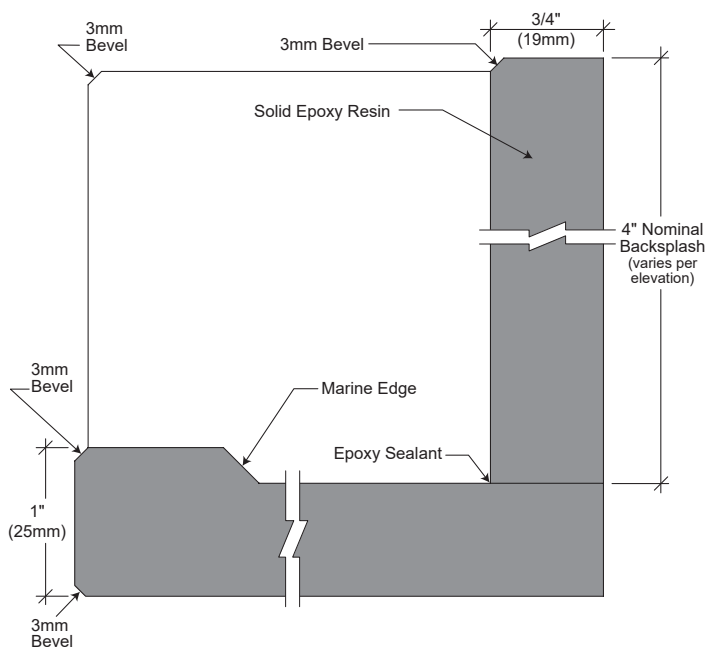
- Solid epoxy resin
- 3mm beveled edges with smooth edge finish
- Applied backsplash and endsplash
- Drip groove
- Butt joints and attachment with field applied epoxy sealant and adhesives
- Epoxy resin coordinated sinks where specified
- Factory fabricated cutouts and drillings

AVAILABLE COUNTERTOP THICKNESSES:

Epoxy

- 19mm (3/4")
- 25mm (1")

ES02



ES02 EPOXY RESIN

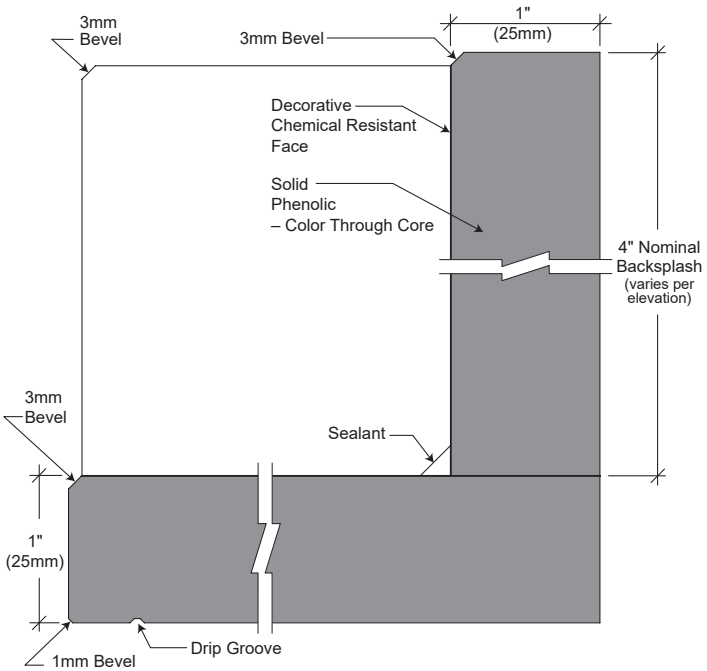
- Solid epoxy resin
- Lipped marine edge
- 3mm beveled edges with smooth edge finish
- Applied backsplash and endsplash
- Butt joints and attachment with field applied epoxy sealant and adhesives
- Epoxy resin coordinated sinks where specified
- Factory fabricated cutouts and drillings

AVAILABLE COUNTERTOP THICKNESS:

Epoxy

- 25mm (1")

CP00



CP00 PHENOLIC

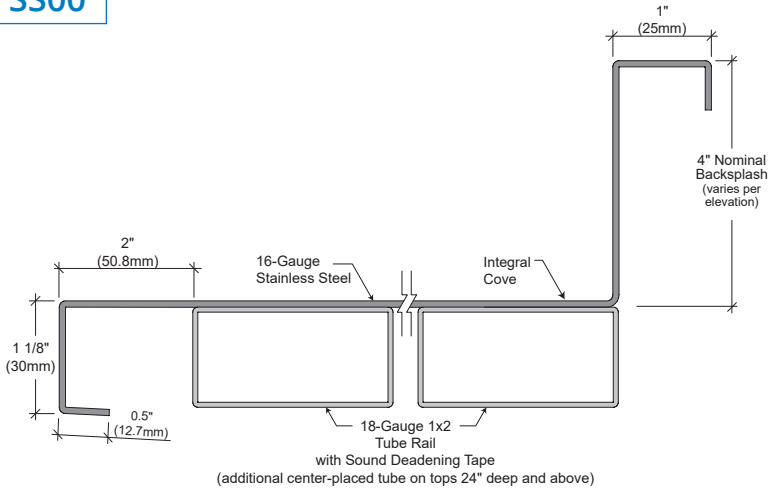
- Solid phenolic core (color through core) with decorative chemical resistant face
- 3mm beveled top edge, polished for consistent edge look
- Applied backsplash and endsplash
- Drip groove

AVAILABLE COUNTERTOP THICKNESSES:

Phenolic

- 19mm (3/4")
- 25mm (1")

SS00



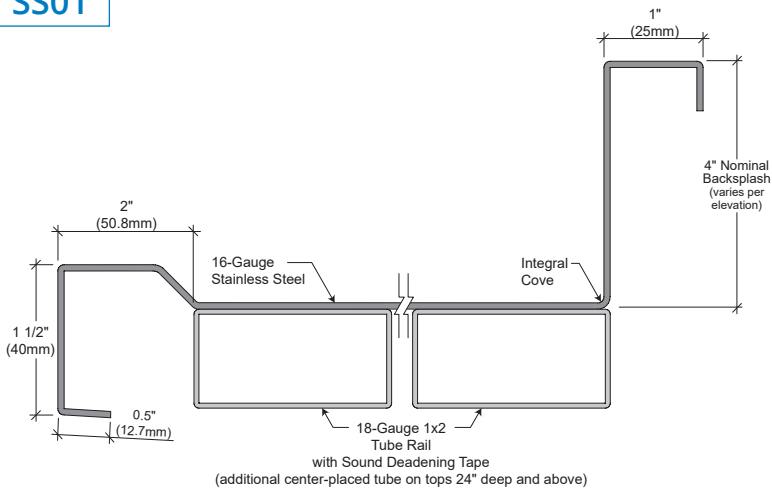
SS00 STAINLESS STEEL

- Formed edge design with integral cove
- Fabricated from 16-gauge 304 stainless steel
- Formed edges and bends with welded and polished corners

AVAILABLE COUNTERTOP THICKNESS:

Stainless Steel
30mm (1-1/8")

SS01



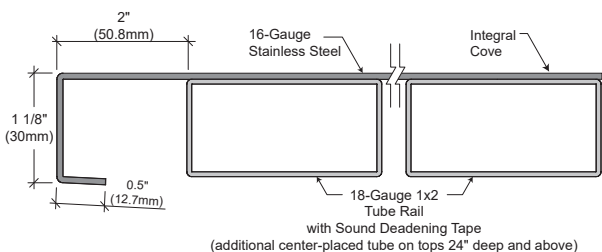
SS01 STAINLESS STEEL

- Marine edge design with integral cove
- Fabricated from 16-gauge 304 stainless steel
- Formed edges and bends with welded and polished corners

AVAILABLE COUNTERTOP THICKNESS:

Stainless Steel
40mm (1-1/2")

SS02



SS02 STAINLESS STEEL

- Formed edge design
- Fabricated from 16-gauge 304 stainless steel
- Formed edges and bends with welded and polished corners

AVAILABLE COUNTERTOP THICKNESS:

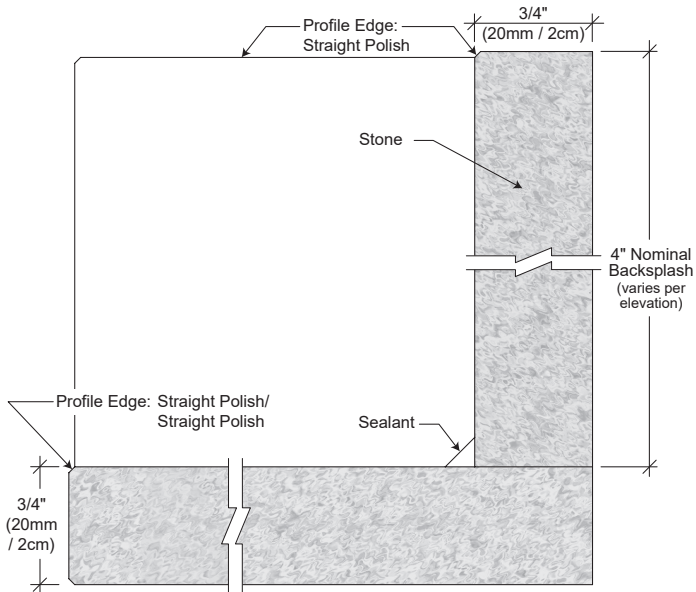
Stainless Steel
30mm (1-1/8")

COUNTERTOPS

Stone Series



HS00



HS00 HARD SURFACES

- Solid Granite / Solid Marble / Solid Quartz
- Straight Polish/Straight Polish profile edge top
- Applied Straight Polish profile edge backsplash and endsplash

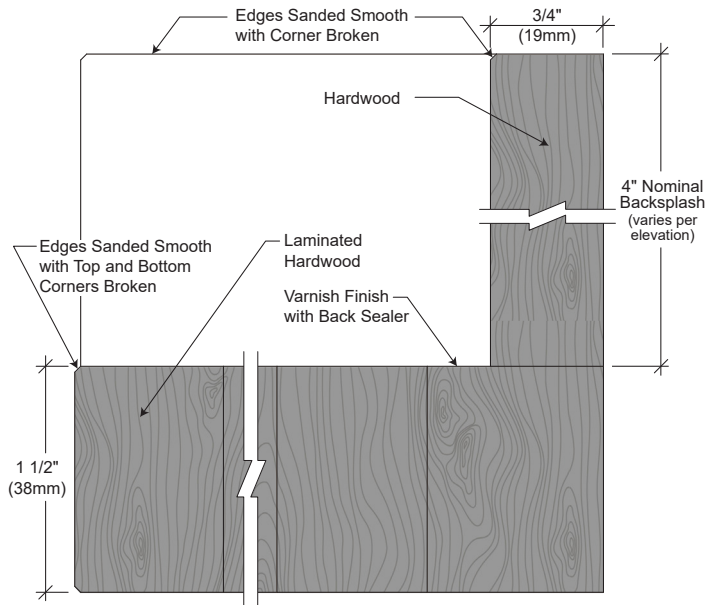
AVAILABLE COUNTERTOP THICKNESSES:

Stone Surfaces

20mm / 2cm (3/4")

30mm / 3cm (1-3/16")

WD00



WD00 HARDWOOD EDGE-GRAINED

- Laminated kiln dried hardwood lumber
- Industrial grade with butt joints and edge grain fabrication (butcher block) design
- Edges sanded smooth with top and bottom corners broken
- Faces and edges sealed with varnish finish

AVAILABLE COUNTERTOP THICKNESSES:

Hardwood
38mm (1-1/2")

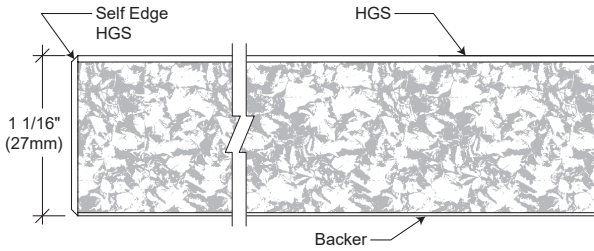
Note: Hardwood lumber tops are susceptible to changes due to moisture, heat and cold conditions. Warpage and edge splitting may occur under unusual field conditions. Wood tops should only be delivered and installed after project HVAC systems are working and balanced for normal interior conditions. Never store or use in high or low humidity with cyclical conditions. Sinks and sink cutouts not recommended and will void warranty.

WINDOWSILLS

Laminate Series



LS07



LS07 LAMINATE WINDOWSILL

- Self edge

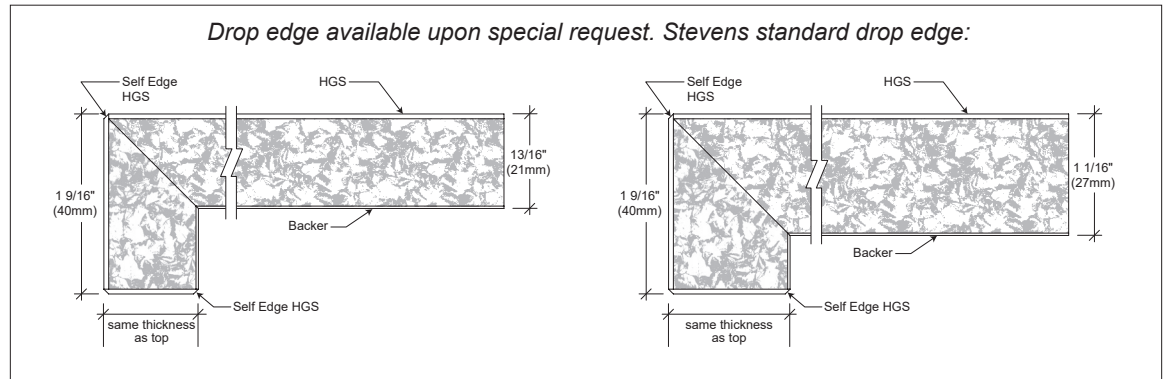
AVAILABLE WINDOWSILL THICKNESSES:

All Cores Except Plywood

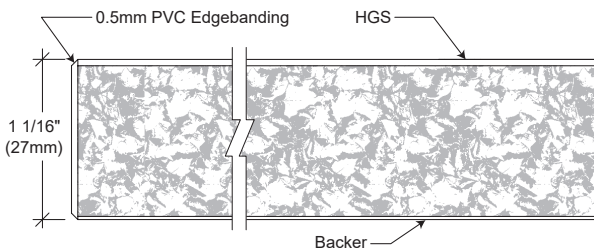
- 21mm (13/16")
- 27mm (1-1/16")
- 30mm (1-3/16") (n/a for fire-rated particleboard)
- 40mm (1-9/16") (n/a for fire-rated MDF)

Plywood 20mm (3/4")

- 27mm (1-1/16")
- 40mm (1-9/16")



LS03



LS03 LAMINATE WINDOWSILL

- Flat edge PVC

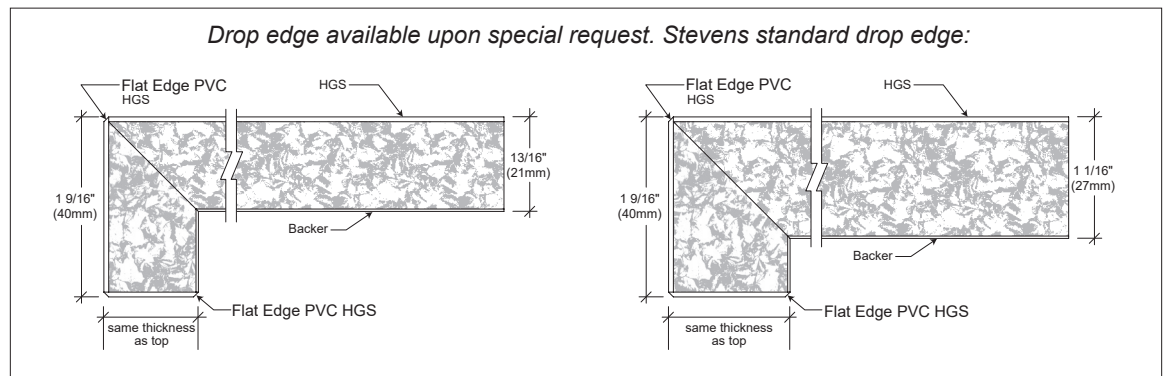
AVAILABLE WINDOWSILL THICKNESSES:

All Cores Except Plywood

- 21mm (13/16")
- 27mm (1-1/16")
- 30mm (1-3/16") (n/a for fire-rated particleboard)
- 40mm (1-9/16") (n/a for fire-rated MDF)

Plywood 20mm (3/4")

- 27mm (1-1/16")
- 40mm (1-9/16")



LS00

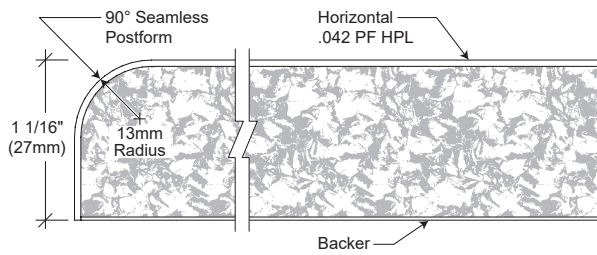
LS00 LAMINATE WINDOWSILL

- 90° postform edge

AVAILABLE WINDOWSILL THICKNESSES:

All Cores Except Plywood

- 21mm (13/16")
- 27mm (1-1/16")
- 30mm (1-3/16") (n/a for fire-rated particleboard)
- 40mm (1-9/16") (n/a for fire-rated MDF)



WINDOWSILLS

Solid Surface Series



PS59

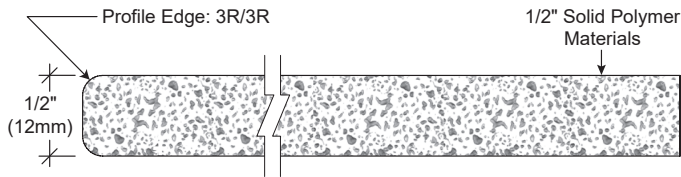
PS59 SOLID SURFACE WINDOWSILL

- Solid surface (polymer) materials
- 3R/3R profile edge

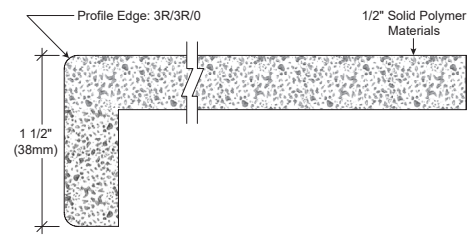
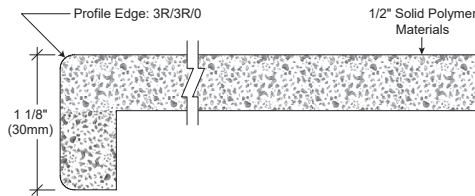
AVAILABLE WINDOWSILL THICKNESS:

Solid Surface

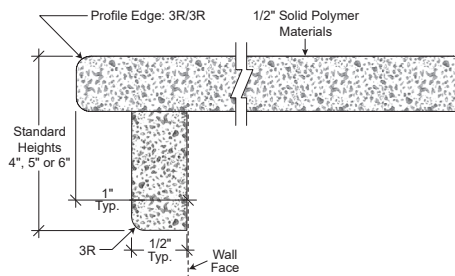
12mm (1/2")



Drop edge available upon special request. Stevens standard drop edges:



Offset sill with apron available upon special request. Standard heights are 4", 5" and 6".



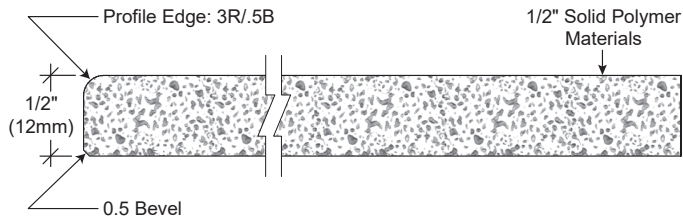
PS60

PS60 SOLID SURFACE WINDOWSILL

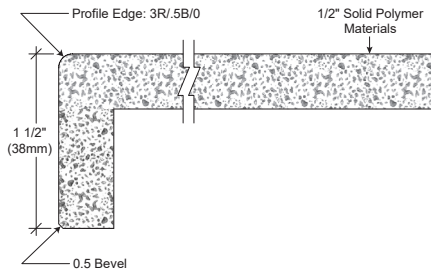
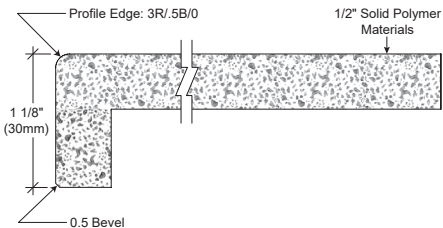
- Solid surface (polymer) materials
- 3R/.5B profile edge

AVAILABLE WINDOWSILL THICKNESS:

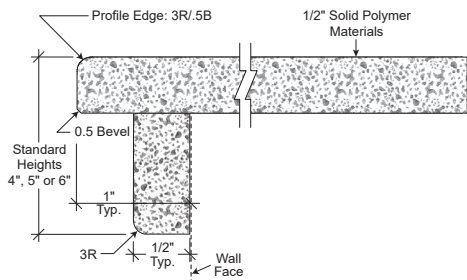
Solid Surface
12mm (1/2")



Drop edge available upon special request. Stevens standard drop edges:



Offset sill with apron available upon special request. Standard heights are 4", 5" and 6".

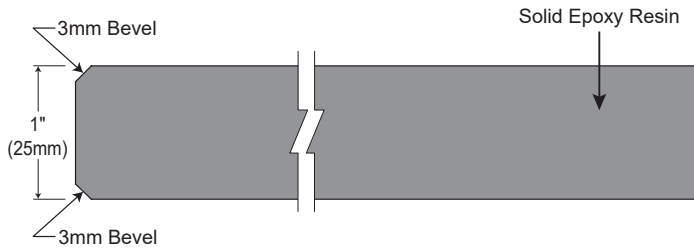


WINDOWSILLS

Solid Core



ES00



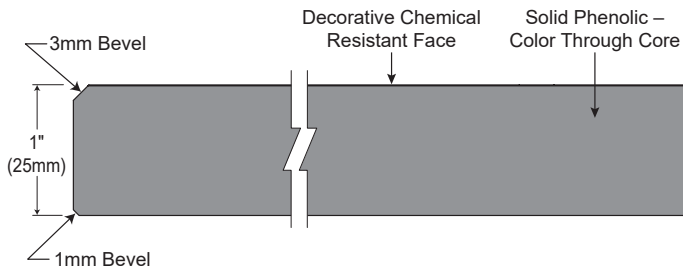
ES00 EPOXY RESIN WINDOWSILL

- Solid epoxy resin
- 3mm beveled edges with smooth edge finish

AVAILABLE WINDOWSILL THICKNESSES:

Epoxy
19mm (3/4")
25mm (1")

CP00



CP00 PHENOLIC WINDOWSILL

- Solid phenolic core (color through core) with decorative chemical resistant face
- 3mm beveled top edge, polished for consistent edge look

AVAILABLE WINDOWSILL THICKNESSES:

Phenolic
19mm (3/4")
25mm (1")