



# COLOR SELECTOR

1000 Group  
2000 Group  
3000 Group  
4120 Series  
5000 Group  
6000 Group  
7000 Group

Manufacturer's Standards

(other colors available upon request – see back cover)

MADE IN THE  
USA  
SINCE 1956

[stevensadvantage.com](http://stevensadvantage.com)

# CABINET OPTIONS – our most popular surface patterns!



Fusion Maple  
7909-60 / 560



Kensington Maple  
10776-60 / 673



Limber Maple  
10734-60 / 614



Brazilwood  
7946-38 / W07



Monticello Maple  
7925-60 / W21



Fonthill Pear  
10745-60 / 621

Laminates  
and  
Edgebanding  
Matched



Amber Cherry  
7919-60 / 681



Wild Cherry  
7054-60 / 567



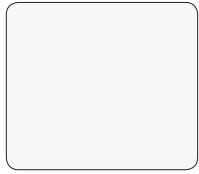
Biltmore Cherry  
7924-60 / W30



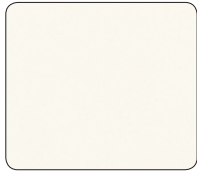
Shaker Cherry II  
7935-60 / 652



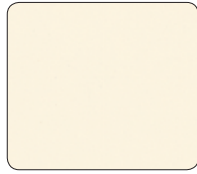
Empire Mahogany  
7122-60 / 531



Designer White  
D354-60 / 388



Frosty White  
1573-60 / 043



Antique White  
1572-60 / 104



Natural Almond  
D30-60 / 220



Fashion Grey  
D381-60 / 227



Black  
1595-60 / 174

## ADDITIONAL CABINET OPTIONS



Manitoba Maple  
7911-60 / 547



Natural Maple  
756-58 / 544



Beigewood  
7850-60 / 572



Natural Ribbonwood  
8840-58 / G18



Castle Oak  
7928-60 / W28



Golden Oak  
7888-60 / 548



Natural Oak  
346-58 / 638



Congo Spruce  
7062-60 / 516



Natural Cherry  
7737-58 / W20



Tuscan Walnut  
7921-60 / 695



Huntington Maple  
7929-60 / 553



Glamour Cherry  
6208-43 / 539



River Cherry  
7937-38 / 616



Black Walnut  
3485-58 / G20



Windsor Mahogany  
7039-60 / 549



Figured Mahogany  
7040-60 / 202



Prestige Walnut  
6209-43 / W56



Espresso Pear  
5489-58 / G61



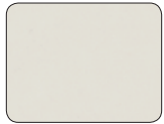
Khaki Brown  
D50-60 / 207



Pepperdust  
D327-60 / 176



Shadow  
D96-60 / 120



Pumice Grey  
1500-60 / 070



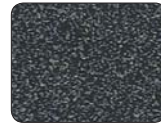
Dove Grey  
D92-60 / C82



North Sea  
D90-60 / 008



Slate Grey  
D91-60 / 129



Graphite Nebula  
4623-60 / 030



Woolamai Brush  
4746-60 / A87



Atlantis  
D25-60 / 118



Sheer Mesh  
4876-38 / E30



Soft Gold Mesh  
4911-38 / 338



Classic Linen  
4943-38 / D47



Pewter Mesh  
4878-38 / 084



Steel Mesh  
4879-38 / B95



Sweet Corn  
4916-60 / 049



Tangerine  
4915-60 / E26



Pomegranate  
4914-60 / 047



Sprout  
4918-60 / 175

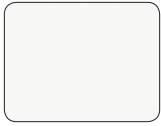


Eggplant  
4913-60 / 162

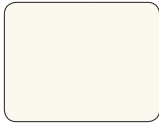
Laminates  
and  
Edgebanding  
Matched

for a great looking  
project with optimum  
lead time!

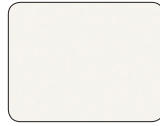
# COUNTERTOP OPTIONS for 27mm (1<sup>1</sup>/<sub>16</sub>" ) and 30mm (1<sup>3</sup>/<sub>16</sub>" ) thick countertops (3mm edgebanding matched)



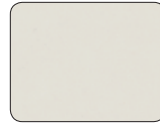
Designer White  
D354-60 / 388



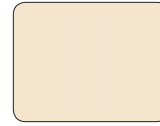
Frosty White  
1573-60 / 043



Neutral White  
918-58 / E03



Pumice Grey  
1500-60 / 070



Light Beige  
1531-60 / 098



Beige  
1530-60 / 021



Khaki Brown  
D50-60 / 207



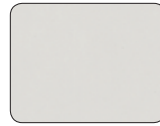
Pepperdust  
D327-60 / 176



Shadow  
D96-60 / 120



Slate Grey  
D91-60 / 129



Fashion Grey  
D381-60 / 227



Dove Grey  
D92-60 / C82



North Sea  
D90-60 / 008



Black  
1595-60 / 174



Fusion Maple  
7909-60 / 560



Kensington Maple  
10776-60 / 673



Castle Oak  
7928-60 / W28



Monticello Maple  
7925-60 / W21



Fonthill Pear  
10745-60 / 621



Huntington Maple  
7929-60 / 553



Brazilwood  
7946-38 / W07



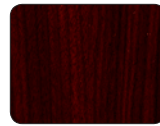
River Cherry  
7937-38 / 616



Wild Cherry  
7054-60 / 567



Biltmore Cherry  
7924-60 / W30



Empire Mahogany  
7122-60 / 531



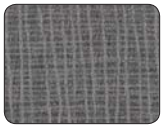
Prestige Walnut  
6209-43 / W56



Graphite Grafix  
515-58 / A78



Graphite Nebula  
4623-60 / 030



Citadel Warp  
5882-58 / B25



Silicon EV  
4811-60 / 374



Tan Soapstone  
4887-38 / A28



Pearl Soapstone  
4886-38 / C60



Sable Soapstone  
4883-38 / E52



Green Soapstone  
4885-38 / B34



Oiled Soapstone  
4882-38 / C65



Neutral Weft  
5875-58 / A37



Sheer Mesh  
4876-38 / E30



Soft Gold Mesh  
4911-38 / 338



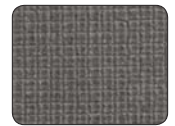
Classic Linen  
4943-38 / D47



Casual Linen  
4944-38 / C77



Pewter Mesh  
4878-38 / 084



Steel Mesh  
4879-38 / B95



Desert Zephyr  
4841-60 / E99



Natural Tigris  
4669-60 / 755



Antique Brush  
4823-60 / D91



Beige Nebula  
4624-60 / 226



White Tigris  
4783-60 / 073



White Nebula  
4621-60 / 005



Grey Nebula  
4622-60 / 044



Olive Legacy  
4654-60 / 403



Canyon Zephyr  
4842-60 / A01



Bronze Legacy  
4656-60 / 724



Evening Tigris  
4674-60 / A55



Twilight Zephyr  
4845-60 / A51



Carbon EV  
4820-60 / 376



Navy Legacy  
4651-60 / 109



Sweet Corn  
4916-60 / 049



Tangerine  
4915-60 / E26



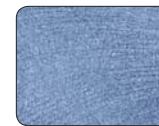
Pomegranate  
4914-60 / 047



Sprout  
4918-60 / 175



Eggplant  
4913-60 / 162



Woolamai Brush  
4746-60 / A87

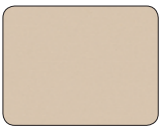


Atlantis  
D25-60 / 118

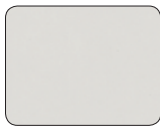
## 40mm (1<sup>5</sup>/<sub>16</sub>" ) COUNTERTOP EDGING OPTIONS



Designer White  
D354-60 / 388



Khaki Brown  
D50-60 / 207



Fashion Grey  
D381-60 / 227



Black  
1595-60 / 174

Any laminate from countertop options above can be used for 40mm countertops. However, 3mm edgebanding must be chosen from the four options shown at left.

## Manufacturer's Standards

These patterns are the standard options available for a base price. In addition, matching edgebandings have been developed and produced to alleviate minimum purchases and to minimize lead times.

Thousands of options are available; however, pricing and lead times may be affected. Should you have a wish, want or specification, please contact Stevens Industries for more options.

 **Wilsonart**

 **FORMICA**

 **NEVAMAR**  
DECORATIVE SURFACES

 **PIONITE**  
DECORATIVE SURFACES



Stevens Industries, Inc.  
704 West Main Street  
Teutopolis, Illinois 62467  
P: 217.857.7100 F: 217.857.7101

**217.857.7100**  
**stevensind.com**  
**stevensadvantage.com**

Colors shown are printed reproductions.  
Actual colors may vary.  
Not all designs are shown at 100% scale.  
Samples available upon request.

©2016 Stevens Industries, Inc.  
Due to continuing product development,  
Stevens reserves the right to change  
specifications without notice.