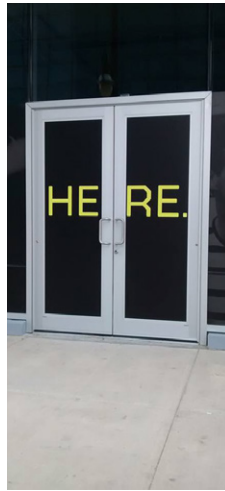
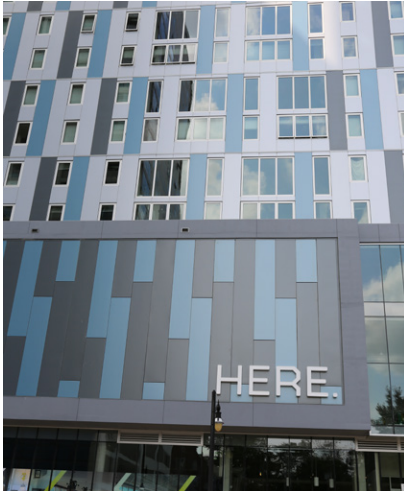




COMMERCIAL CABINETRY AND MILLWORK LABORATORY CABINETRY AND SPECIALTIES

- Education
- Healthcare
- Furniture
- Band and Music
- Laboratory



HERE APARTMENTS

308 East Green Street – Champaign, Illinois

Casework Series: 2701 StevensWood® Ultimate (Textured Laminate)

Millwork: Lobby Desk, Custom Coffee Bar, Wood Wall Paneling, Armoire Units, Kitchen and Bathroom Casework

Architect: Hartshorne Plunkard Architecture (HPA)

Construction Manager: Clayco

Stevens Direct

Project Value: \$864,000

Installed: 2015



Industry-affiliated with:



AWI ARCHITECTURAL WOODWORK INSTITUTE



MADE IN THE
USA
SINCE 1956