



COMMERCIAL CABINETRY AND MILLWORK LABORATORY CABINETRY AND SPECIALTIES

- Education
- Healthcare
- Furniture
- Band and Music
- Laboratory



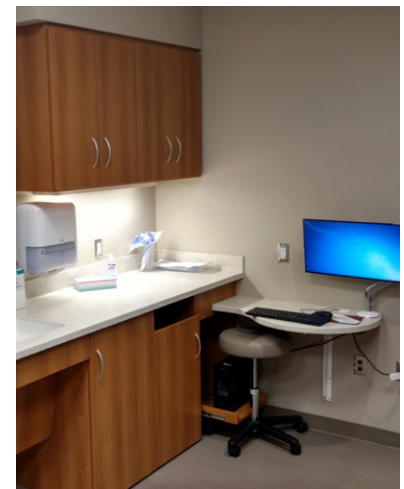
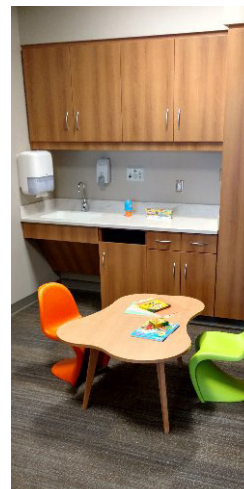
BUFFETT CANCER CENTER

Nebraska Medicine / University of Nebraska Medical Center
Omaha, Nebraska

Casework Series: 1200 Tradition
Millwork: Display Cases in Grand Lobby, Veneer Wall Panels, Nurse Stations, Exam Rooms, Headwalls, Footwalls, Solid Surface Countertops and Windowsills

Architect: HDR
Construction Manager: Kiewit Construction
Stevens Direct

Project Value: \$2,200,000
Installed: 2017



Industry-affiliated with:



ARCHITECTURAL
WOODWORK
INSTITUTE



MADE IN THE USA
SINCE 1956

stevensadvantage.com